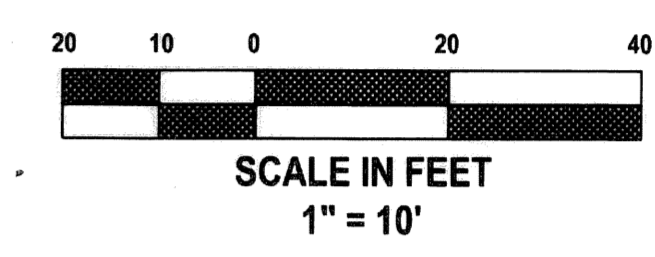
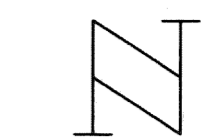


OCEAN WINDS OF JUNO BEACH

BEING A REPLAT OF A PORTION OF THE PLAT "NEW PALM BEACH HEIGHTS", PLAT BOOK 6, PAGE 73, AND A PORTION OF HOWARD JOHNSON'S, PLAT BOOK 60, PAGE 97, LYING IN SECTION 28, TOWNSHIP 41 SOUTH, RANGE 43 EAST, TOWN OF JUNO BEACH, PALM BEACH COUNTY, FLORIDA

JANUARY, 2005

SHEET 2 OF 2

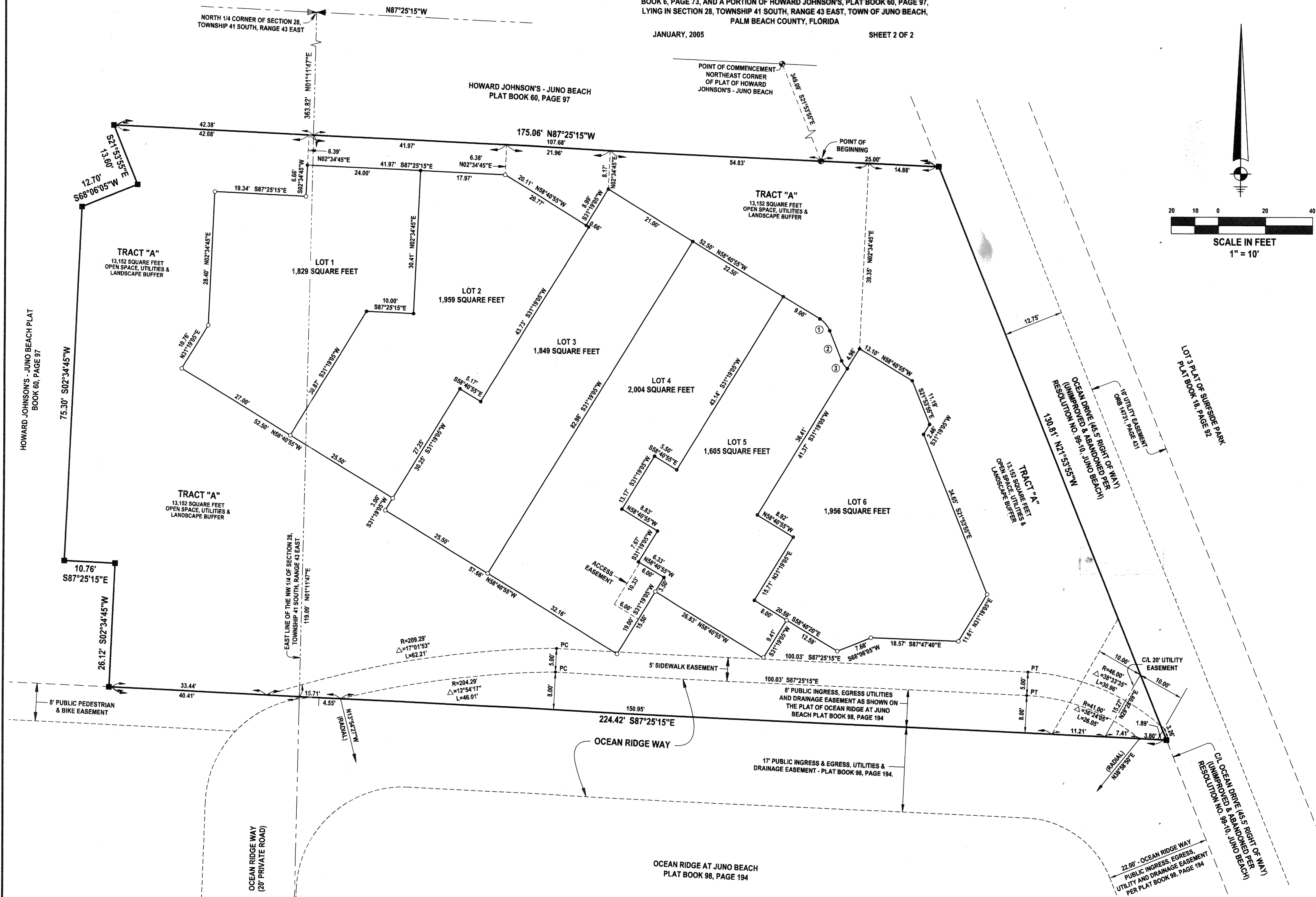


STATE OF FLORIDA
COUNTY OF PALM BEACH
THIS PLAT WAS FILED FOR RECORD AT _____ DAY OF _____ 2005
AND DULY RECORDED IN PLAT BOOK NO. _____ ON PAGE _____
DORTHY H. WILKEN,
CLERK OF THE CIRCUIT COURT
BY _____ DEPUTY CLERK


SURVEYOR'S NOTES

1. Abbreviations used on this plat are as follows:
- = (P.R.M.) Permanent Reference Monument
 - 4" X 4" Concrete Monument with a P.K. & Disk Stamped "PRM LB 4165"
 - = (Monument) - 5/8" Iron Rod & Cap or PK Nail & Disk - Stamped LB 4165
 - L.B. = Licensed Business
 - C/L = Centerline
 - ORB = Official Record Book
 - PC = Point of Curve
 - PT = Point of Tangent
 - R = Radius
 - Δ = Delta
 - L = Length

CURVE & LINE DATA	
①	R=5.33' Δ=36°47'00" L=3.42'
②	6.87' S21°53'55"E
③	R=4.00' Δ=29°29'29" L=2.06'



THIS INSTRUMENT WAS PREPARED BY: DONALD D. DANIELS
IN THE OFFICES OF DONALD D. DANIELS, INC.

 DONALD D. DANIELS, INC. Consulting Surveyors & Mappers	OCEAN WINDS OF JUNO BEACH	
	Florida Certificate LB No. 4165 725 North A-1-A, Suite C-111 Jupiter, Florida 33477 Tel: (561) 747-9894	REFERENCE: 673 OFFICE: D. OSHA CHECKED: DDD
	SCALE: 1"=10'	DWG. NUMBER: 02-076.22P
		SHEET 2 OF 2